



windows^{plus}doors

by Horton Building Plastics

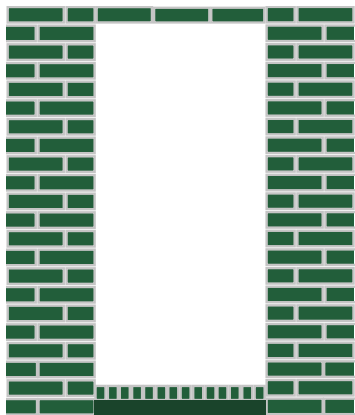
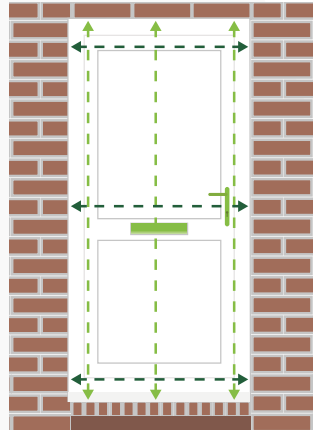
Visage

Composite Door Installation Guide

Measuring for a new composite door

1. Always measure outside from brick to brick.
2. Measure height & width across 3 points – **see drawing.**
3. Always use the smallest measurement.
4. Deduct 10mm from the height and the width when you order the door.

Always use smallest measurements



1

Preparation

After carefully removing the existing door, make sure the brickwork is clean and free from debris.

Positioning the door

2

Position the complete doorset into the brickwork opening from the outside.

- Use the air gap on the inside as a guide.
- The 4-5mm gap between frame and door should be equal across the top and both sides of the door.



- Use wedge packers to hold the frame in position.
- Locate packers next to fixing points to stop the frame from distorting when tightening the fixings.

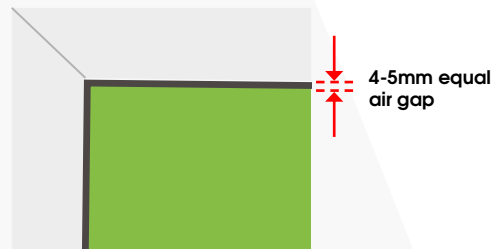
Door Alignment Checklist:

- ✓ Use a long spirit level to check the door is square and plumb in both planes.
- ✓ Don't push the frame up against the plasterline - leave a minimum 10-15mm gap.
- ✓ Frame must be square and not twisted.
- ✓ Bridge the wall cavity.
- ✓ Cover the DPC.



Check the air gap:

- On the inside, there should be a 4-5mm air gap between the door and frame across the top and down the sides.
- Pack the frame or cill until the gap is equal.



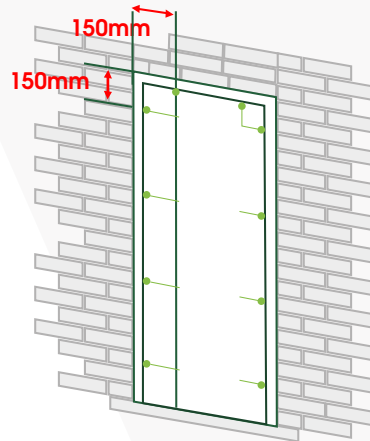
Fixing positions

3

Fixing locations may vary to make it into a secure substrate.

Recommended positions are:

- Corner fixings maximum 150mm from external corner.
- Intermediate fixings at a maximum of 450mm centres.
- Minimum of 6 fixings per door jamb.
- Each fixing point must be below and above a hinge or door keep.



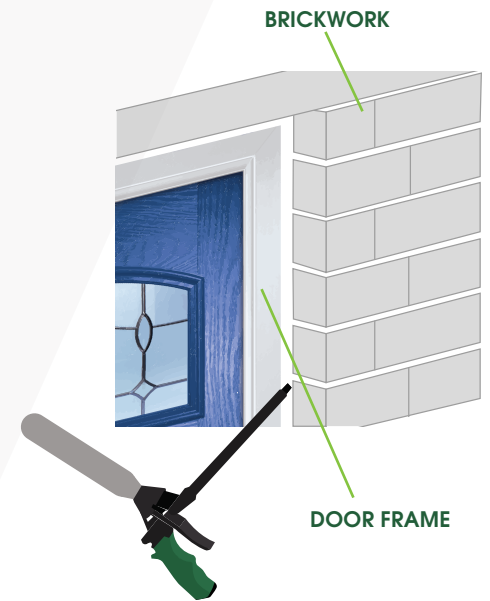
Fix the frame into brickwork not mortar.

Sealing the door

4

- Apply expanding foam between the frame and brickwork.
- Cut back when dry and apply a high quality exterior grade silicone sealant.
- Fit external and internal trims as required.

Do not seal across the front of the aluminium threshold as this may block concealed drainage holes.



Handles & Keeps

5

- Lever handles and keeps should be fitted and adjusted using hand tools only.

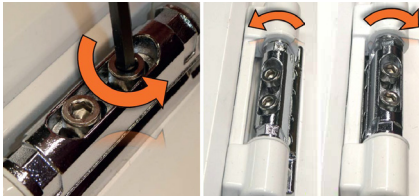


Hinge Adjustment

6

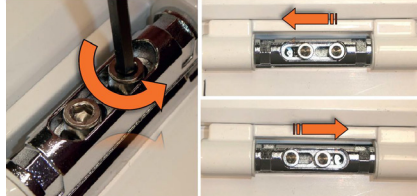
- Doors are fitted with three heavy duty hinges for height and lateral adjustment.
- Make any adjustments with the door closed.
- Follow the instructions below to make hinge adjustments.

Lateral Adjustment +/- 4mm 4mm Allen key



- Lateral Adjustment: (Note: Lateral and height adjustment can be made simultaneously)
- Slacken off both MS Cap Head Screws on all hinges (and ensure they are retightened after adjustment). The door can now be moved one way or the other around the nominal position

Height Adjustment +/- 4mm 4mm Allen key



- Height Adjustment: (Note: Lateral and height adjustment can be made simultaneously)
- Slacken off both MS Cap Head Screws on all hinges (and ensure they are retightened after adjustment). The door can now be moved up or down around the nominal position

Windowsplusdoors

Unit 9 Britannia Business Park,
North Road, Stoke-on-Trent, ST6 2PZ



windows^{plus}doors

by Horton Building Plastics

www.windowsplusdoors.co.uk